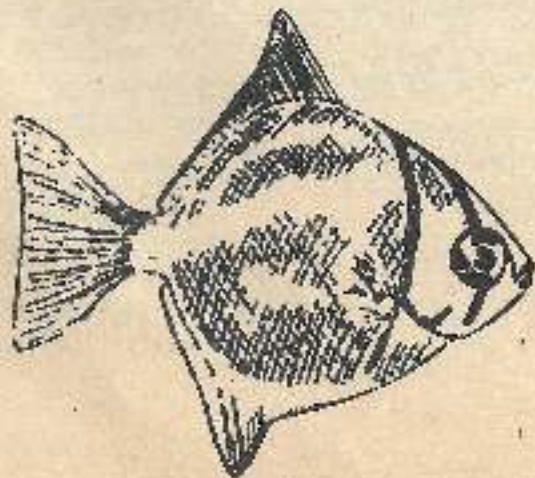




24 PM

CAOAC

CONVENTION



MAY
20-22, 53



Holiday Inn®
Number One in people pleasing.

An oasis in all seasons...

The Holidome® awaits your every pleasure at Holiday Inn Guelph, where a five-storied glass atrium surrounds an indoor garden and recreation area featuring the Lounge Bar, Courtyard Cafe, swimming pool, whirlpool and sauna, putting green and shuffleboard court.

And there's a great place to meet...at Tingle's the city's most exciting nightspot. Of course, regular room features—air conditioning, extra-long double beds, colour TV and specially designed furniture—make Holiday Inn Guelph a wonderful place to relax.

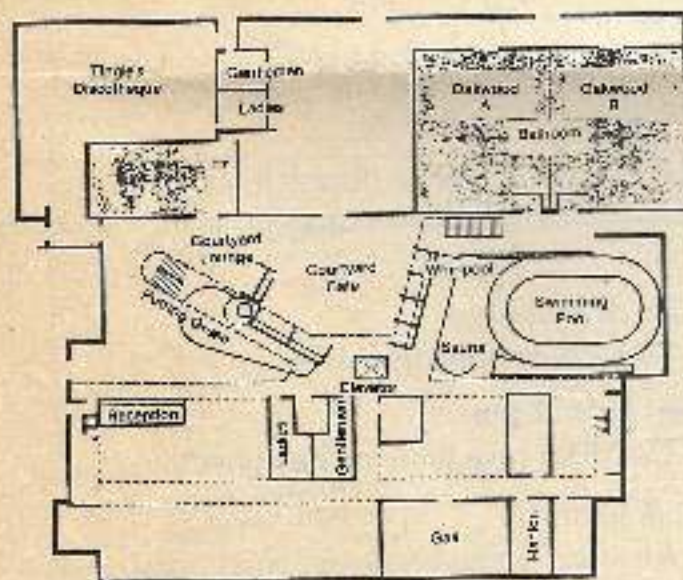
The Inn also offers meeting facilities for up to 500 and VIP or honeymoon suites. The Inn is adjacent to new indoor shopping facilities and central to area cultural and natural attractions. Holiday Inn Guelph is a hotel where it's summer all year.



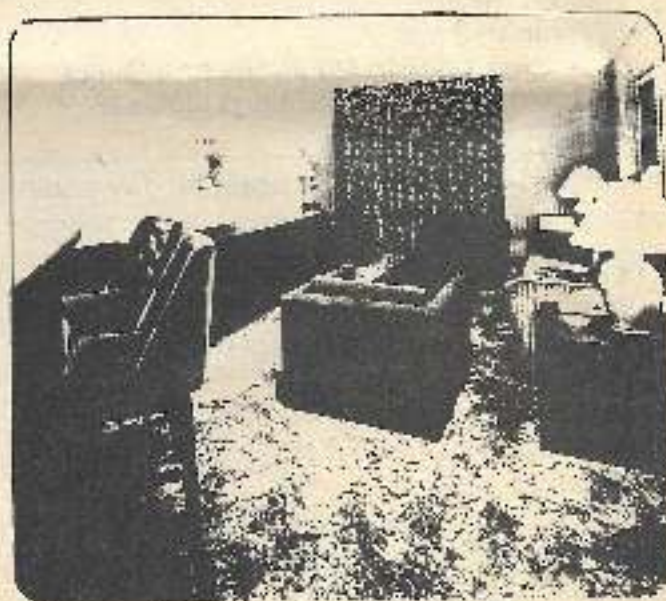
601 Scottsdale Drive
Guelph, Ontario
Canada N1G 3E7
Telephone (519) 838-0231

Courtyard Cafe — 7 a.m. to 10 p.m.
Courtyard Lounge — Noon to 1 a.m.
Tingle's Lounge — 8 p.m. to 1 a.m.

Indoor Swimming Pool, Sauna and Whirlpool — 10 a.m. to Midnight



FLOOR PLAN



CLUB HOSPITALITY SUITE

ADVANCE REGISTRATION FORM — AQUARIUM CLUB CONVENTION (For Holiday Inn Only) (Please Print)

Name _____
Address _____
City _____ Province _____ Postal Code _____
Arrival Date _____
Departure Date _____
Room Type: Single _____ \$46.00
 Double _____ \$52.00

NOTE: Rooms must be registered by May 6, 1983 either by mail or by phone to your nearest Holiday Inn.

*Prices valid starting May 19, 1983 until May 23, 1983.

C.A.O.A.C.

The Canadian Association of Aquarium Clubs is a group of people representing aquarium clubs from Canada and northern U.S.A. We were formed approximately twenty-five years ago with the aim of promoting, helping, and encouraging anyone with an interest in things aquatic. Our activities are directed and controlled by a body of representatives from more than thirty clubs and societies located in Canada, and including active member clubs in the northern U.S.A.

Our purpose is to assist member clubs with their activities in the aquarium hobby in any possible way, with emphasis on program material and communications. C.A.O.A.C. is not a club, nor is it a separate body having a purpose unto itself. It is, in fact, a centralized forum for member clubs to use to meet, work, play, and discuss anything and everything of interest to them.

This is the only way in which projects which require the collective cooperation of many widely distributed aquarists can be achieved. Our yearly Convention is a very good example. Without C.A.O.A.C. such a venture would never receive the support of so many hobbyists. We, as individuals, would not have the opportunity to meet and know so many of our fellow aquarists, nor would we be able to present speakers, seminars, etc., on such a wide scale. Individual clubs could never hope to afford the cost of acquiring films and slides, nor make the contacts for speakers, judges, etc., that are available through participation in C.A.O.A.C. As an organization, C.A.O.A.C. can only be as strong as its member clubs; during the coming year, remember that the more YOU participate in, and give your support to, C.A.O.A.C., the more it can do for YOUR club.

SPONSORS

WITH THANKS TO THE FOLLOWING SPONSORS FOR THEIR MANY CONTRIBUTIONS



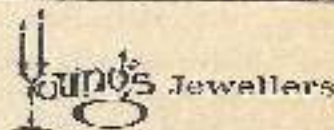
Willow West Mall

YOUR FRIENDLY COMMUNITY MALL 821-4310

Best Wishes,
Guelph,
for
'1983



from
Willowdale
Aquarium
Society
&
Toronto
Betta
Buffs



Stone Road Mall Guelph 822-7221

**MATADOR
FITNESS CENTRE**

824-0880

DALMYS

STONE ROAD MALL
836-3266

BOOTLEGGERS JEANS

STONE ROAD MALL 837-0901

RADIO SHACK

STONE ROAD MALL

Special thanks to all Aquarium
Product Manufacturers also.

MORSE JEWELERS

STONE ROAD MALL
PH: 836-8180



WICKHAMS TELEVISION LTD.

Stoneroad Mall
Guelph, Ontario



(519)821-3150

Also thanks to
those who
did not
make
the
printing
date
in time.



WEBMAN LTD.

WEB OFFSET PRINTERS
93 REGAL ROAD
GUELPH, ONTARIO
519-836-3580

This program has been typeset and compiled
by **WPT Typesetting Limited**

291 WOODLAWN RD. W., GUELPH,
824-3238

Guelph has it all

Guelph has it: colorful history, rich cultural heritage and active cultural life, convenient shopping and services, scenic setting, sports and athletics, educational opportunities of every sort and a stimulating intellectual environment. Located in southwestern Ontario's industrial and agricultural heartland, Guelph is a bustling centre for recreation, culture, commerce and education... all at a pace and on a scale you can enjoy.

From tree-lined residential streets to well planned industrial areas, Guelph balances a quality living environment with a healthy economy. The compact downtown area mixes modern office and apartment buildings, well-landscaped squares and historic stone buildings, many of them restored to combine 21st century efficiency with 19th century charm. One of the original railroad stations lives on as the Chamber of Commerce headquarters, while a venerable hotel got a new lease on life as an office building.

Rising majestically above the cityscape are the twin spires of the Church of Our Lady, begun in the 1870's and built to cathedral-like dimensions. Other fine examples of stone churches abound throughout the city.

For a whirlwind excursion into Guelph's colorful past, visit the Civic museum in the restored Knights of Columbus Hall. Tour the birthplace cottage of John McCrae, famed physician, soldier and author of the immortal war poem, "In Flanders Fields". Then explore Heritage Park along the Speed River where John Galt felled a maple tree in 1827 to mark Guelph's founding and where later Allan's Mill became a landmark. The mill wheel is the focal point for the stonework and gardens which were dedicated during Guelph's 150th anniversary year.

Riverside Park is a great place to enjoy an afternoon. See a model of Guelph's first house, the Priory, built in 1828. The floral clock displays a unique combination of flowering annuals each year. Or, you can ride the carousel and the miniature train, take in a concert at the bandshell, have a picnic and play in the river.

The internationally acclaimed Guelph Spring Festival brings the best of Canadian and international musical talent to the city for two weeks of eclectic entertainment each May. Throughout the year, Guelph audiences enjoy a varied menu of the performing arts, from visiting theatre and dance companies to home-grown talent like the Guelph Little Theatre, the Suzuki String orchestra and the Overtones singers.

Visual arts also play a major role in the cultural scene in Guelph. The Macdonald-Stewart Art Centre, opened in October of 1980, is a gallery and art resource centre offering programs, courses, lectures, tours and changing exhibits throughout the year.



GUELPH SKYLINE

Since 1874 Guelph has been a centre for higher education, first with the Ontario Agricultural College and since 1964 with the University of Guelph. The University operates three semesters a year and has a full time undergraduate and graduate student population of about 9,000. It also offers credit and non-credit programs for learners of all ages. Modern and historic buildings complement the varied landscaping on the well-planned, 1,100-acre campus. It's a glorious walking experience in any season.

In the adjacent Arboretum, nature lovers and gardeners can view the collections and take self-guided nature tours through mature woods, along hedge rows, through fields and along boardwalks built over swamps. Nature programs, like maple syrup production, owl hoots, winter tree identification and insect study are popular with young and old alike.

Come to friendly Guelph for a day or a week. We'll be glad to see you.



COL. JOHN MCCRAE MEMORIAL GARDENS



FLORAL CLOCK



THE GARDUBEL

Col. Sanders Recipe
Kentucky Fried Chicken™
A CANADIAN COMPANY



**24th ANNUAL
AQUARIUM CONVENTION SPECIAL!
COUPON OFFER**

**SAVE
.50c**

**OFF THE REGULAR
PRICE**

24th ANNUAL AQUARIUM CONVENTION

**WHEN YOU BUY OUR
DELICIOUS 3 PIECE DINNER**

Includes 3 pieces of Finger Lickin' Good
Chicken, Fries, Cole Slaw, &
Grecian Bread. One coupon
per dinner.



**THE BEST
TASTING
CHICKEN
THERE IS!**

**JUST ACROSS
THE ROAD FROM
THE CONVENTION**

**Kentucky
Fried Chicken**

ZEBRA PET SHOPS

ROOT PLAZA
666 WOOLWICH ST.
GUELPH, ONTARIO
836-5040



FOR YOUR
COMPLETE PET
SUPPLIES



YOUR
SCIENCE DIET
DEALER



YOUR PET IS OUR PRIDE

BUSINESS HOURS

MON. TO WED. 10-6
THURS. & FRI. 10-9
SAT. 10-6



AQUARIAN ADVENTURE

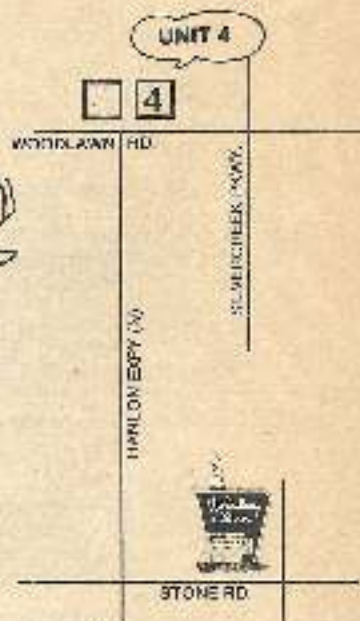
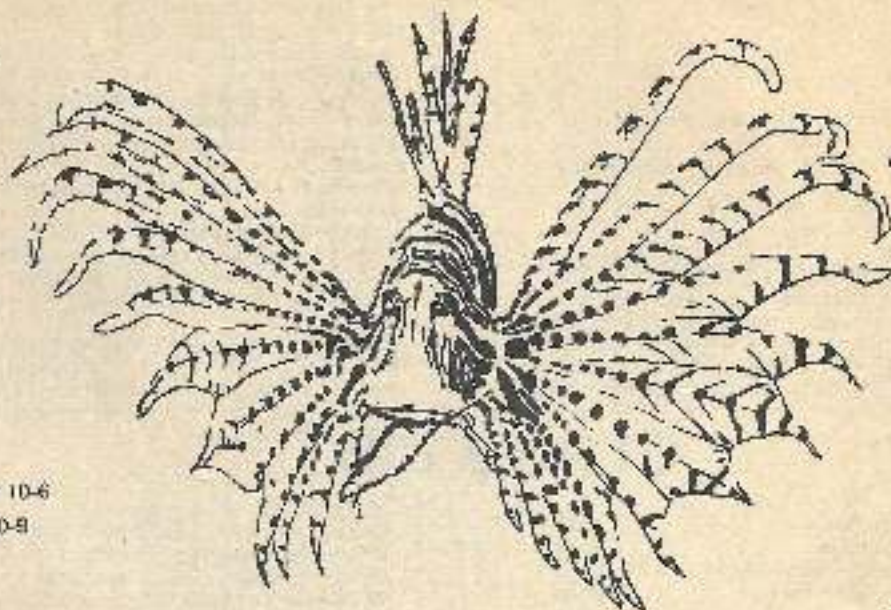
SPECIALISTS IN QUALITY TROPICAL FISH

Special Convention Hours

Fri. May 20th
10 a.m. to 9 p.m.
Sat. May 21st
10 a.m. to 6 p.m.
Sun. May 22nd
10 a.m. to 2 p.m.
Mon. May 23rd
10 a.m. to 2 p.m.

Regular Hours

Monday to Wednesday 10-6
Thursday and Friday 10-8
Saturday 10-6



AQUARIAN ADVENTURE WELCOMES ALL FISH NUTS TO GUELPH

WE HANDLE RIFT CICHLIDS, MARINE, ODDITIES
AND THE BEST SELECTION OF TROPICAL FISH IN THE AREA.

BREEDERS AND DEALERS
ARE WELCOME

"2500 GALLONS TO SERVE YOU RIGHT"

10% OFF ALL FISH

FOR ALL CONVENTIONEERS'
When Presenting Convention
Identification Pass

At AQUARIAN ADVENTURE

291 Woodlawn Rd., Unit 4
Guelph 822-1181

MAY ONLY BE USED DURING
SPECIAL CONVENTION HOURS.

PLEASE PRESENT IN ADVANCE

BREEDERS SPECIAL

40 gallon
aquarium
(48"x12"x16")

TRIM EXTRA

\$40.00

LIMITED TIME ONLY.

10% OFF ALL FISH

ON MAY 26th, 27th AND 28th

AT AQUARIAN ADVENTURE

291 Woodlawn Rd., Unit 4
Guelph 822-1181

OR

COUPON MAY BE USED TOWARDS
FREE GRAVEL WHEN PURCHASING
ONE OF OUR COMPLETE TANK KITS.

PLEASE PRESENT IN ADVANCE

WHOLESALE

RETAIL

MAIL-INS

- Betta entries will be handled by:
 Chuck Chapman
 1-12 Brent Ave.
 Guelph, Ontario
 N1K 1K7
 (519) 858-2413
- Killifish entries will be handled by:
 Dave Turner
 Arthur St. N.
 Guelph, Ontario
 (519) 823-5172
- Canadian mail-in entries for the show must be sent via air mail, special delivery
- Special arrangements can be made for US entries by phoning:
 Pat Fenske (519) 837-2275
 or (519) 838-7838
- Mark all entries "RUSH—BIOLOGICAL SPECIMENS"
- Entries must be received by May 20, 1983.
- Mail-in entries will be returned if sufficient postage is included with the entry form. If we are unable to obtain the minimum bid requested by the exhibitor wishing to auction his entries, the fish or item will be returned to him at his cost unless otherwise stated on the entry form.

AUCTION RULES

FRIDAY NIGHT

- Dry goods and other related goods may be auctioned off after 'Monte Carlo Nite' (mid to 1 a.m.).
- GAC will retain 15% of the price at this time only.

SUNDAY AFTERNOON

- The fish will be auctioned in order of registration (to begin Sunday at 10:30 a.m.).
- The auction split is 70%, with GAC retaining 30%.
- The show auction split is 75%, with GAC retaining 25%.
- GAC will only retain (maximum) of \$5.00 for livestock. GAC will only retain (maximum) of \$10.00 for hardware.
- GAC is using the box system. Numbers will be available at noon.
- If anything sells for 50c or less per bag, all money will go to GAC.
- Auction will progress at minimum 25c intervals.
- All fish must be in non-leaking containers. Any containers which leak or need to be re-bagged by GAC members will cost owner 50c each, and will be deducted from his share.
- Indicate on registration form if your show fish is to be auctioned.
- Payment will be made to owners in 10 days.

CLASS LIST

REGULAR CLASSES

- | | |
|---|--------|
| 1. Swordtails—common finnage | pairs |
| 2. Swordtails—fancy finnage | pairs |
| 3. Platies and Moons—common finnage | pairs |
| 4. Platies and Moons—fancy finnage | pairs |
| 5. Mollies | pairs |
| 6. Livebearer from Classes 1-5 | single |
| 7. Guppy—male solid colour | single |
| 8. Guppy—male any other colour | single |
| 9. Guppy—female | single |
| 10. Angels and Discus | single |
| 11. Cichlids—mouth brooders | single |
| 12. Cichlids—3" and under (mature size) | pairs |
| 13. Cichlids—over 4" (mature size) | single |
| 14. Cichlids—AOV | single |
| 15. Catfish—6" and under (mature size) | single |
| 16. Catfish—over 6" (mature size) | single |
| 17. Corydoras and Brochis | pairs |
| 18. Suckermouth Catfish | single |
| 19. Harps | single |
| 20. Characins | single |
| 21. Tetras | pairs |
| 22. Sharks | single |
| 23. Loaches (including Bots) | single |
| 24. Minnows | pairs |
| 25. Gobies | single |
| 26. Koi | single |
| 27. Native Fish to Canada | single |
| 28. Anabantids—3" and under (mature size) | pairs |
| 29. Anabantids—over 3" (mature size) | single |
| 30. Egglayer from Classes 9, 14, 18, 21, 25 | single |
| 31. Livebearer Family—parents and 6-10 fry | ----- |
| 32. Egglayer Family—parents and 6-10 fry | ----- |
| 33. Plants | ----- |
| 34. Aquatic Animal | single |
| 35. Trio Matched Fish | ----- |
| 36. AOV Egglayer | single |
| 37. AOV Egglayer | pairs |
| 38. AOV Livebearer | single |
| 39. AOV Livebearer | pairs |
| 40. Varina Fish | single |
| 41. Brackish Water Fish | single |
| 42. Janitor/Oper—16 years and under | single |
| 43. Bowl Beautiful | ----- |
| 44. Aquarium Beautiful | ----- |
| 45. Novelty | ----- |
| 46. Arts and Crafts | ----- |
| 47. Photography—colour prints | ----- |
| 48. Photography—colour slides | ----- |
| 49. Photography—black and white prints | ----- |

KILLIFISH CLASSES

- | | |
|---|-------|
| 50. Aplocheilichthys Species—over 3 inches | pairs |
| 51. Aplocheilichthys Species—under 3 inches | pairs |
| 52. Notropis Species | pairs |
| 53. All Other Old World Species | pairs |
| 54. All Other New World Species | pairs |

BETTA CLASSES

- | | |
|--|--------|
| 55. Betta—dark body, solid colour STM | single |
| 56. Betta—light body, solid colour STM | single |
| 57. Betta—bicolour, dark or light STM | single |
| 58. Betta—dark or light, patterned STM | single |
| 59. Betta—double tail male | single |
| 60. Betta—dark body single tail female | single |
| 61. Betta—light body single tail female | single |
| 62. Betta—dark or light bicolour, patterned STF | single |
| 63. Betta—double tail female | single |
| 64. Betta—brooder class—3 matched M or F | ----- |
| 65. Betta—trial class—new colour, form or wild types | single |

REMEMBER — SPECIAL INFORMATION

WEEKEND TICKET: \$80.00 COUPLE
 \$45.00 SINGLE

Remember tickets must be purchased in writing by
 May 13, 1983.

Tickets will be available at the Convention.
 Make cheque payable to Guelph Aquarium Club

Send information and money to:

PAT FENSKE
 210 WALTON RD. N.
 GUELPH, ONTARIO N1H 6H3
 PHONE: (519) 837-2275 or (519) 838-7838

Name	_____
Address	_____
City	_____
Province	_____ Postal Code
Full Convention Ticket:	_____
Single _____ Couple _____ Money Sent \$ _____	
Attending only:	
_____ Lectures _____ Banquet(s) _____ Misc.	
Notes:	_____

(please print)

see costs on page 3

CLUB MEETINGS

Our next club meetings are at Guelph Collegiate, on Paisley and Yorkshire Streets, at 7:30 p.m. in Room 13-13A on the following dates. Why not attend one of them?

March 14, 1983 May 16, 1983 May 9, 1983

April 11, 1983 June 13, 1983

Memberships: Single \$5.00 Family \$10.00

Downtown Magic casts a Summer Spell

"Heavens!" cried the newcomers, "such clean attractive streets... so open ...so friendly ...there's nothing like this in our old town."



Which is perfectly understandable, after all, only a handful of Canadian cities can boast of a spacious tree lined streetscapes ... the sales people are and courteous." over 230 shops are by local merchants



"And the shops – what variety... so knowledgeable Well said we, the for the most part run ... people who take pride in their City. there's something else," said he,



admiring a finely tailored sports coat said she, checking out her perfect smile silver. "A certain magic perhaps?"



guests in the open past treasures of interesting people good or service imaginable ... "and "Downtown makes me feel good about Guelph,"



*"A certain ambience," in a display of antique said we, steering our sunshine and fresh air, fine gifts, historic sites and virtually every the parking is free" **



she whispered. "we've made the right move" said he. We agreed.



*A fine from free parking on city lots – additional free parking with business could be found downtown streets

For information call Downtown Board of Management 147 Wyndham St. N. Suite 406 Tel. 836-6144